



Tamworth

District

This profile was produced on 12 August 2014



Health Profile 2014

Health in summary

The health of people in Tamworth is varied compared with the England average. Deprivation is lower than average, however about 19.7% (3,000) children live in poverty. Life expectancy for both men and women is similar to the England average.

Living longer

Life expectancy is 7.9 years lower for men in the most deprived areas of Tamworth than in the least deprived areas.

Child health

In Year 6, 17.4% (119) of children are classified as obese. The rate of alcohol-specific hospital stays among those under 18 was 57.6*. This represents 10 stays per year. Levels of teenage pregnancy, GCSE attainment, breastfeeding and smoking at time of delivery are worse than the England average.

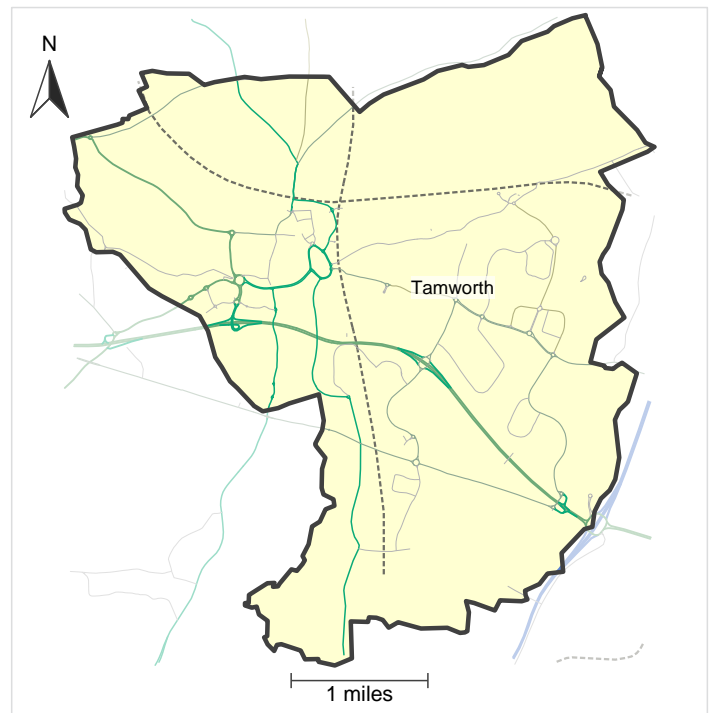
Adult health

In 2012, 27.4% of adults are classified as obese, worse than the average for England. The rate of alcohol related harm hospital stays was 613*. This represents 444 stays per year. The rate of self-harm hospital stays was 169.9*. This represents 131 stays per year. The rate of smoking related deaths was 259*. This represents 90 deaths per year. Estimated levels of adult excess weight are worse than the England average. Rates of sexually transmitted infections, people killed and seriously injured on roads and TB are better than average. The rate of violent crime is worse than average. Rates of long term unemployment, drug misuse and excess winter deaths are better than average.

Local priorities

Priorities for the Tamworth partnership include improving the health of the people of Tamworth through the Healthy Tamworth initiative which is focused on holistic approaches to health and lifestyle behaviour; supporting older people through promoting ageing well and addressing falls ensuring children and young people have a good start in life. For more information see www.tamworth.gov.uk and www.sesandspccg.nhs.uk

* rate per 100,000 population



© Crown Copyright and database rights 2014, Ordnance Survey 100016969
OpenStreetMap contributors ODbL

Population: 77,000

Mid-2012 population estimate. Source: Office for National Statistics.

This profile gives a picture of people's health in Tamworth. It is designed to help local government and health services understand their community's needs, so that they can work to improve people's health and reduce health inequalities.

Visit www.healthprofiles.info or scan this Quick Response code: for more profiles, more information and interactive maps and tools.

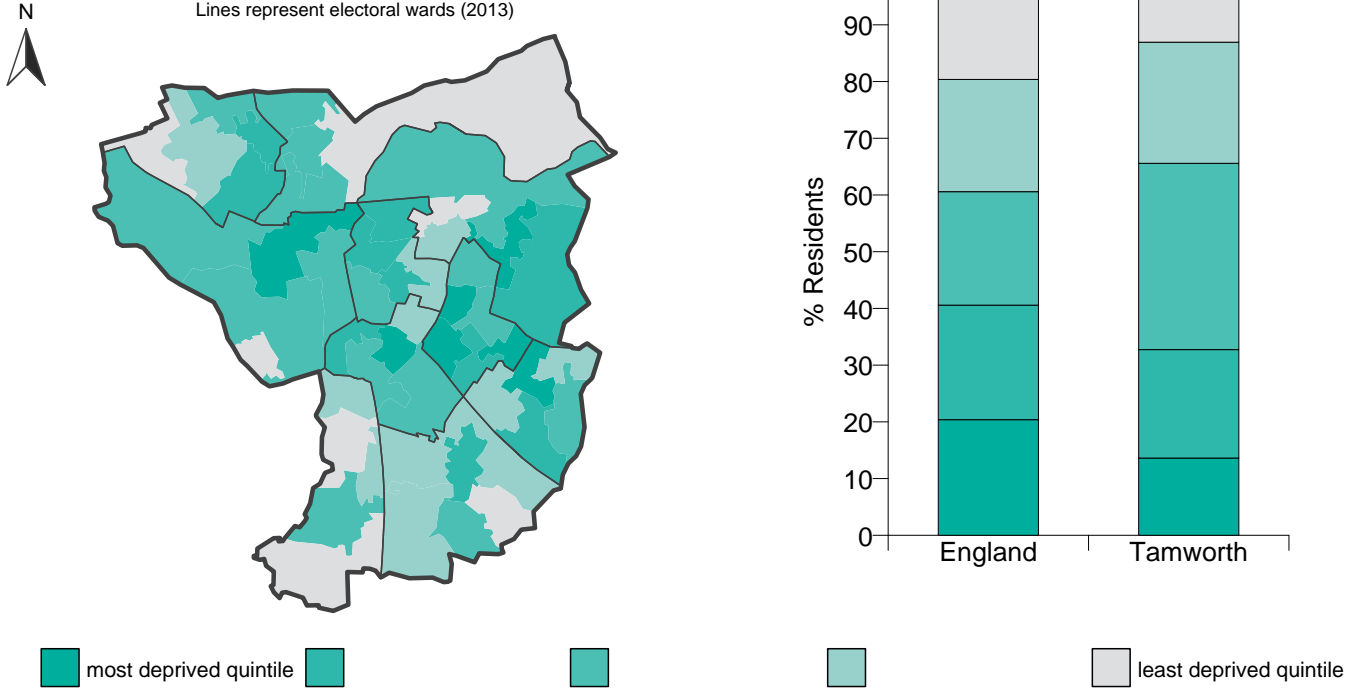


Follow [@healthprofiles](https://twitter.com/healthprofiles) on Twitter

Deprivation: a national view

The map shows differences in deprivation levels in this area based on national quintiles (fifths) of the Index of Multiple Deprivation 2010 by Lower Super Output Area. The darkest coloured areas are some of the most deprived areas in England.

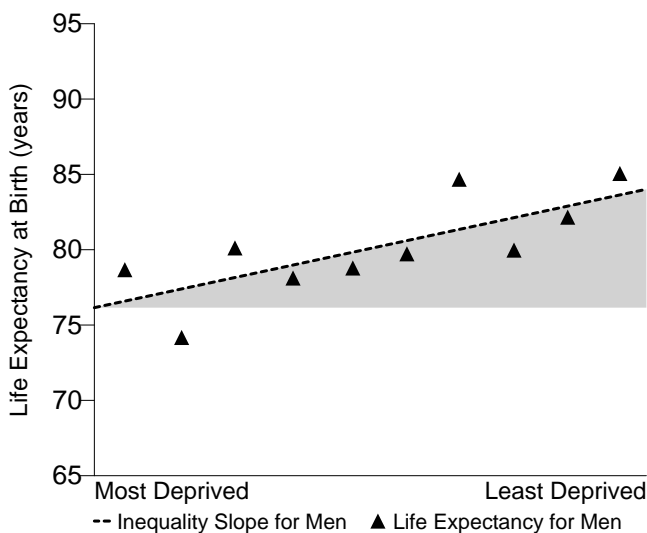
© Crown Copyright and database rights 2014, Ordnance Survey 100016989



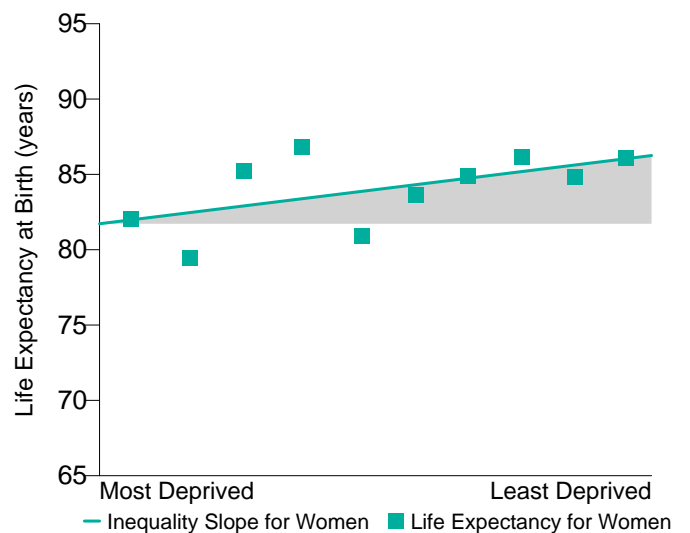
Life Expectancy: inequalities in this local authority

The charts below show life expectancy for men and women in this local authority for 2010-2012. Each chart is divided into deciles (tenths) by deprivation, from the most deprived decile on the left of the chart to the least deprived decile on the right. The steepness of the slope represents the inequality in life expectancy that is related to deprivation in this local area. If there were no inequality in life expectancy as a result of deprivation, the line would be horizontal.

Life Expectancy Gap for Men: 7.9 years

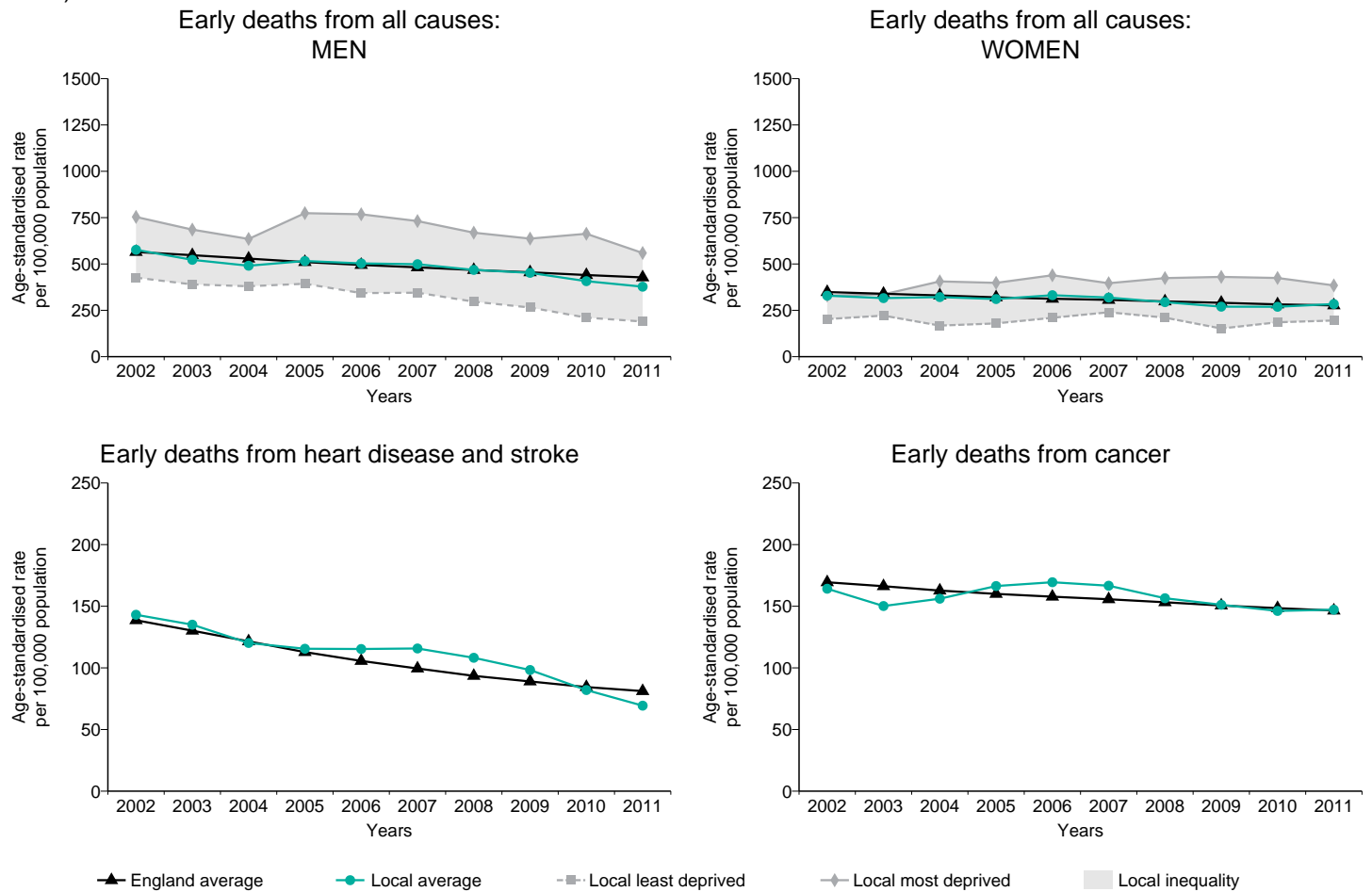


Life Expectancy Gap for Women: 4.5 years



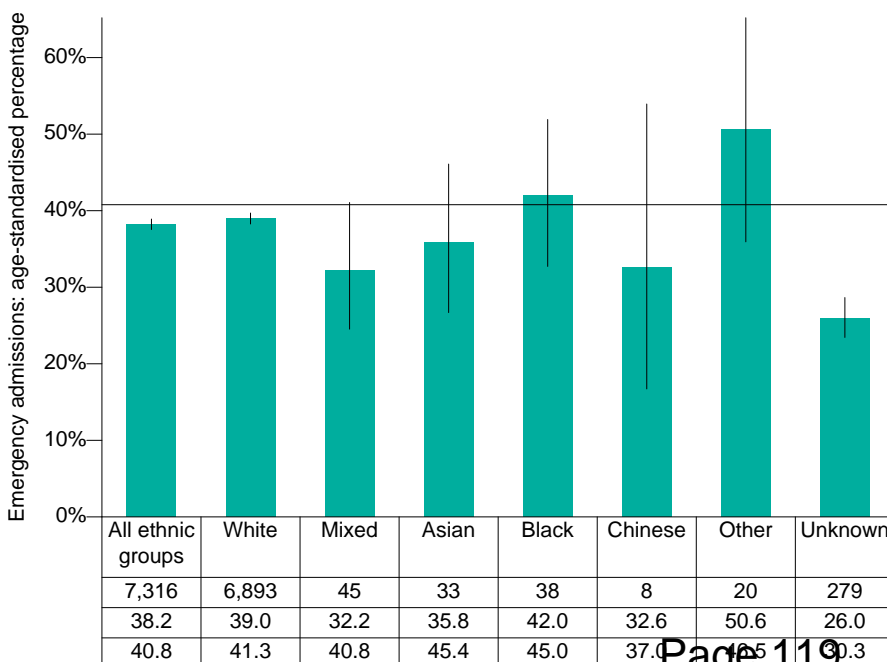
Health inequalities: changes over time

These charts provide a comparison of the changes in early death rates (in people under 75) between this area and all of England. Early deaths from all causes also show the differences between the most and least deprived quintile in this area. (Data points are the midpoints of 3 year averages of annual rates, for example 2005 represents the period 2004 to 2006).



Health inequalities: ethnicity

Percentage of hospital admissions that were emergencies, by ethnic group



This chart shows the percentage of hospital admissions in 2012/13 that were emergencies for each ethnic group in this area. A high percentage of emergency admissions may reflect some patients not accessing or receiving the care most suited to managing their conditions. By comparing the percentage in each ethnic group in this area with that of the whole population of England (represented by the horizontal line) possible inequalities can be identified.

Legend:
 ■ Tamworth
 — England average (all ethnic groups)
 | 95% confidence interval

Figures based on small numbers of admissions have been suppressed to avoid any potential disclosure of information about individuals.

Health Summary for Tamworth

The chart below shows how the health of people in this area compares with the rest of England. This area's result for each indicator is shown as a circle. The average rate for England is shown by the black line, which is always at the centre of the chart. The range of results for all local areas in England is shown as a grey bar. A red circle means that this area is significantly worse than England for that indicator; however, a green circle may still indicate an important public health problem.

Domain	Indicator	Local No Per Year	Local value	Eng value	Regional average^		England Average		England Best
					Eng worst	25th Percentile	75th Percentile	England Range	
Our communities	1 Deprivation	10,503	13.6	20.4	83.8				0.0
	2 Children in poverty (under 16s)	2,985	19.7	20.6	43.6				6.4
	3 Statutory homelessness	68	2.1	2.4	11.4				0.0
	4 GCSE achieved (5A*-C inc. Eng & Maths)	375	47.2	60.8	38.1				81.9
	5 Violent crime (violence offences)	991	12.9	10.6	27.1				3.3
	6 Long term unemployment	261	5.2	9.9	32.6				1.3
Children's and young people's health	7 Smoking status at time of delivery	143	15.1	12.7	30.8				2.3
	8 Breastfeeding initiation	649	68.5	73.9	40.8				94.7
	9 Obese children (Year 6)	119	17.4	18.9	27.3				10.1
	10 Alcohol-specific hospital stays (under 18)	10	57.6	44.9	126.7				11.9
	11 Under 18 conceptions	65	44.0	27.7	52.0				8.8
Adults' health and lifestyle	12 Smoking prevalence	n/a	18.7	19.5	30.1				8.4
	13 Percentage of physically active adults	n/a	54.8	56.0	43.8				68.5
	14 Obese adults	n/a	27.4	23.0	35.2				11.2
	15 Excess weight in adults	134	70.7	63.8	75.9				45.9
Disease and poor health	16 Incidence of malignant melanoma	9	12.0	14.8	31.8				3.6
	17 Hospital stays for self-harm	131	169.9	188.0	596.0				50.4
	18 Hospital stays for alcohol related harm	444	613	637	1,121				365
	19 Drug misuse	305	5.9	8.6	26.3				0.8
	20 Recorded diabetes	4,534	6.5	6.0	8.7				3.5
	21 Incidence of TB	3	2.6	15.1	112.3				0.0
	22 Acute sexually transmitted infections	482	627	804	3,210				162
Life expectancy and causes of death	23 Hip fractures in people aged 65 and over	68	680	568	828				403
	24 Excess winter deaths (three year)	-6	-3.0	16.5	32.1				-3.0
	25 Life expectancy at birth (Male)	n/a	79.4	79.2	74.0				82.9
	26 Life expectancy at birth (Female)	n/a	83.0	83.0	79.5				86.6
	27 Infant mortality	6	5.6	4.1	7.5				0.7
	28 Smoking related deaths	90	259	292	480				172
	29 Suicide rate	6	-	8.5					
	30 Under 75 mortality rate: cardiovascular	43	69.4	81.1	144.7				37.4
	31 Under 75 mortality rate: cancer	92	147	146	213				106
	32 Killed and seriously injured on roads	9	11.3	40.5	116.3				11.3

Indicator Notes

1 % people in this area living in 20% most deprived areas in England, 2010 2 % children (under 16) in families receiving means-tested benefits & low income, 2011 3 Crude rate per 1,000 households, 2012/13 4 % key stage 4, 2012/13 5 Recorded violence against the person crimes, crude rate per 1,000 population, 2012/13 6 Crude rate per 1,000 population aged 16-64, 2013 7 % of women who smoke at time of delivery, 2012/13 8 % of all mothers who breastfeed their babies in the first 48hrs after delivery, 2012/13 9 % school children in Year 6 (age 10-11), 2012/13 10 Persons under 18 admitted to hospital due to alcohol-specific conditions, crude rate per 100,000 population, 2010/11 to 2012/13 (pooled) 11 Under-18 conception rate per 1,000 females aged 15-17 (crude rate) 2012 12 % adults aged 18 and over, 2012 13 % adults achieving at least 150 mins physical activity per week, 2012 14 % adults classified as obese, Active People Survey 2012 15 % adults classified as overweight or obese, Active People Survey 2012 16 Directly age standardised rate per 100,000 population, aged under 75, 2009-2011 17 Directly age sex standardised rate per 100,000 population, 2012/13 18 The number of admissions involving an alcohol-related primary diagnosis or an alcohol-related external cause, directly age standardised rate per 100,000 population, 2012/13 19 Estimated users of opiate and/or crack cocaine aged 15-64, crude rate per 1,000 population, 2010/11 20 % people on GP registers with a recorded diagnosis of diabetes 2012/13 21 Crude rate per 100,000 population, 2010-2012 22 Crude rate per 100,000 population, 2012 (chlamydia screening coverage may influence rate) 23 Directly age and sex standardised rate of emergency admissions, per 100,000 population aged 65 and over, 2012/13 24 Ratio of excess winter deaths (observed winter deaths minus expected deaths based on non-winter deaths) to average non-winter deaths 1.08.09-31.07.12 25 At birth, 2010-2012 26 At birth, 2010-2012 27 Rate per 1,000 live births, 2010-2012 28 Directly age standardised rate per 100,000 population aged 35 and over, 2010-2012 29 Directly age standardised mortality rate from suicide and injury of undetermined intent per 100,000 population, 2010-2012 30 Directly age standardised rate per 100,000 population aged under 75, 2010-2012 31 Directly age standardised rate per 100,000 population aged under 75, 2010-2012 32 Rate per 100,000 population, 2010-2012 ^ "Regional" refers to the former government regions.

More information is available at www.healthprofiles.info Please send any enquiries to healthprofiles@phe.gov.uk

© Crown copyright, 2014. You may re-use this information (not including logos) free of charge in any format or medium, under the terms of the Open Government Licence. To view this licence, visit www.nationalarchives.gov.uk/doc/open-government-licence/version/2/